

The following charts show information on fatalities and seatbelt usage for the state of Nevada.

Information on total fatalities, alcohol related fatalities, person type, and seatbelt usage are from the Fatal Accident Reporting System (FARS). This data is reported by each state and territory to the National Highway Traffic Safety Administration (NHTSA) to be compiled into the national data base.

- [Definitions](#)
 - [Fatal Crash](#)
 - [Alcohol Related](#)
 - [Person Type](#)
 - [Type of Impairment](#)
 - [Seat Belt Usage](#)
 - [Region](#)
- [Seat Belt Usage Chart](#)
- [Fatality Charts](#)
 - [Total vs. Alcohol-Related Statewide 1995-2007](#)
 - [Total Fatalities by Region 1995-2007](#)
 - [Alcohol-Related by Region 1995-2007](#)
 - [Type of Impairment 1995-2006](#)
 - [Motor Vehicle Occupants 2000-2007](#)
 - [Motorcycles 2000-2007](#)
 - [Pedestrians 2000-2007](#)
 - [Bicycles 2000-2007](#)
 - [Person Type 2000-2007](#)
 - [Total vs Alcohol-Related by County 1995-2007](#)
 - [Carson City](#)
 - [Churchill](#)
 - [Clark](#)
 - [Douglas](#)
 - [Elko](#)
 - [Esmeralda](#)
 - [Eureka](#)
 - [Humboldt](#)
 - [Lander](#)
 - [Lincoln](#)
 - [Lyon](#)
 - [Mineral](#)
 - [Nye](#)
 - [Pershing](#)
 - [Storey](#)
 - [Washoe](#)
 - [White Pine](#)

Definitions:

Fatal Crash:

A crash involving a motor vehicle (including motorcycles) that resulted in a death of a driver/passenger, motorcycle rider, pedestrian, or bicyclist while on a publicly maintain roadway.

Alcohol Related:

A fatal crash where either the driver, motorcycle rider, pedestrian or bicyclist had alcohol in their system.

Person Type – Abbreviations:

MVO = Motor Vehicle Occupant

MC = Motorcycle Operator/Rider

PED = Pedestrian

BIKE = Bicyclist

Type of Impairment:

Alcohol (AL) = Alcohol detected (level above 0.01)

Drug (Drug) = Illegal drug detected

Alcohol + Drug (AL + Drug) = Both AL and Drugs were detected

Seat Belt Usage:

Observed = Daytime survey of drivers and front seat passengers.

The survey is taken on six roadway types:

Urban Freeway

Rural Freeway

Urban Arterials

Rural Arterials

Urban Collectors

Rural Collectors

Fatal Usage = This information is taken from the crash report for each deceased MVO.

Region:

South Region: 70 mile radius from Las Vegas (includes Pahrump)

North Region: 70 mile radius from Reno

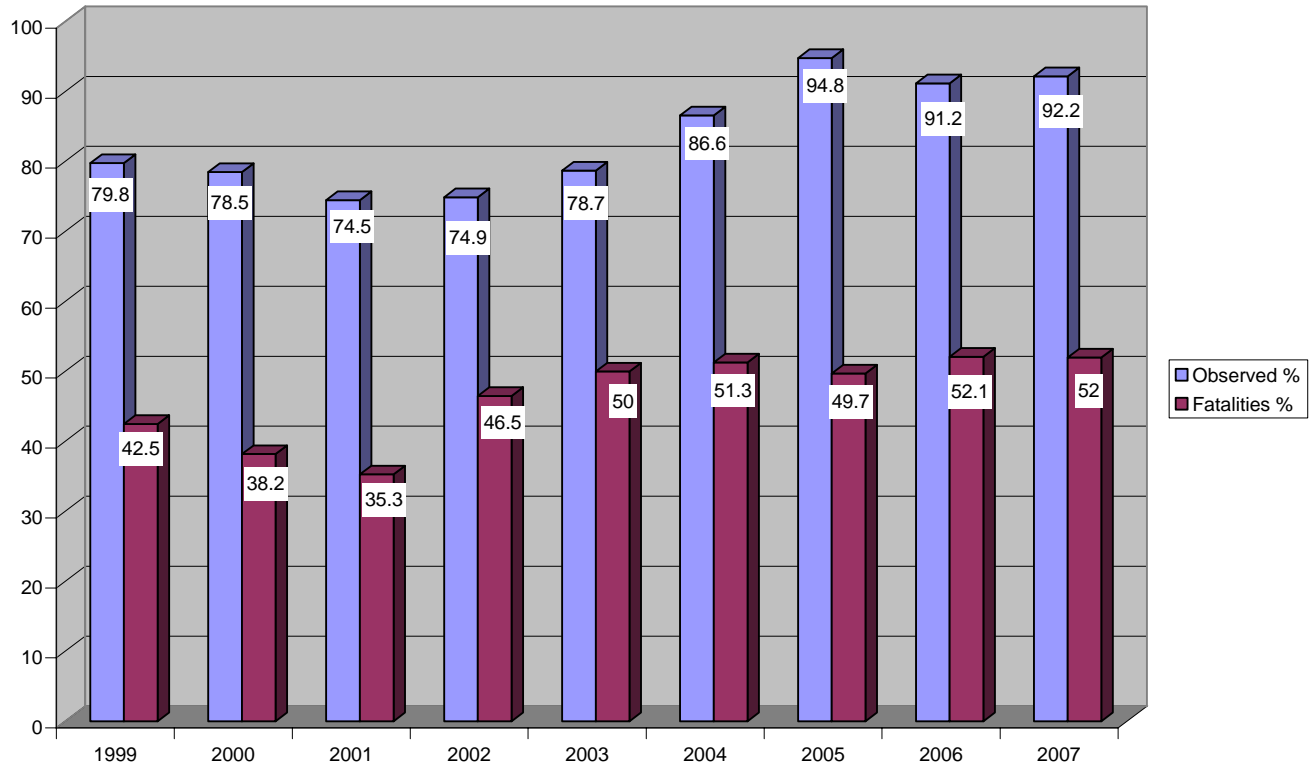
Includes: Washoe, Storey, Carson City, Douglas, Lyon, and Churchill

Rural Region: Balance of State

Includes: Pershing, Humboldt, Lander, Eureka, Elko, White Pine, Lincoln, Nye (excluding Pahrump), Esmeralda, and Mineral

Seatbelt Usage Chart

Seatbelt Comparison - Observed vs Fatalities Nevada 1999 - 2007
% Using Seatbelts



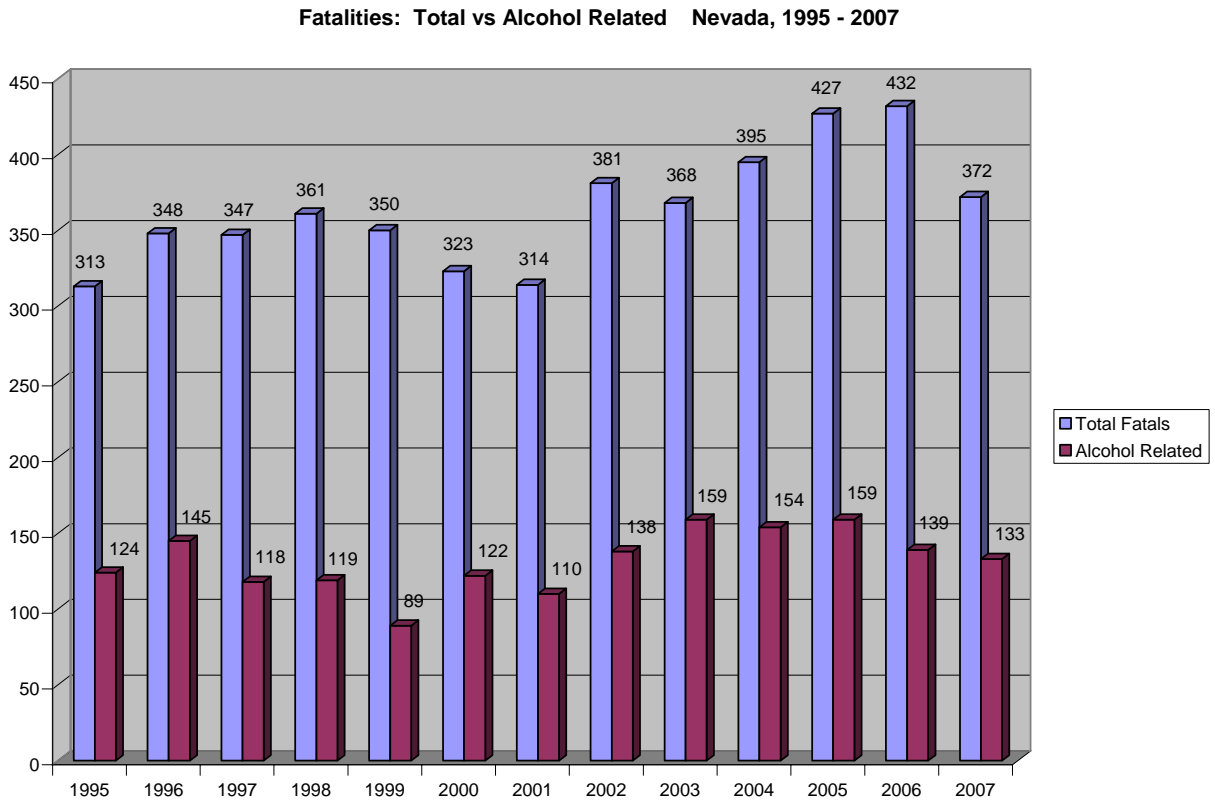
Observed: Observations of belt use during daylight hours, front seat drivers and passengers only. In 2007 92.2% of the people in vehicles observed throughout the state (10,000+ observations) were wearing a seat belt (meaning a shoulder belt, because that is what could be seen by the observer).

Fatalities: Percentage of people killed in motor vehicle crashes who were wearing seat belts. In 2007, 52% of the people that died from crashes were wearing a seat belt.

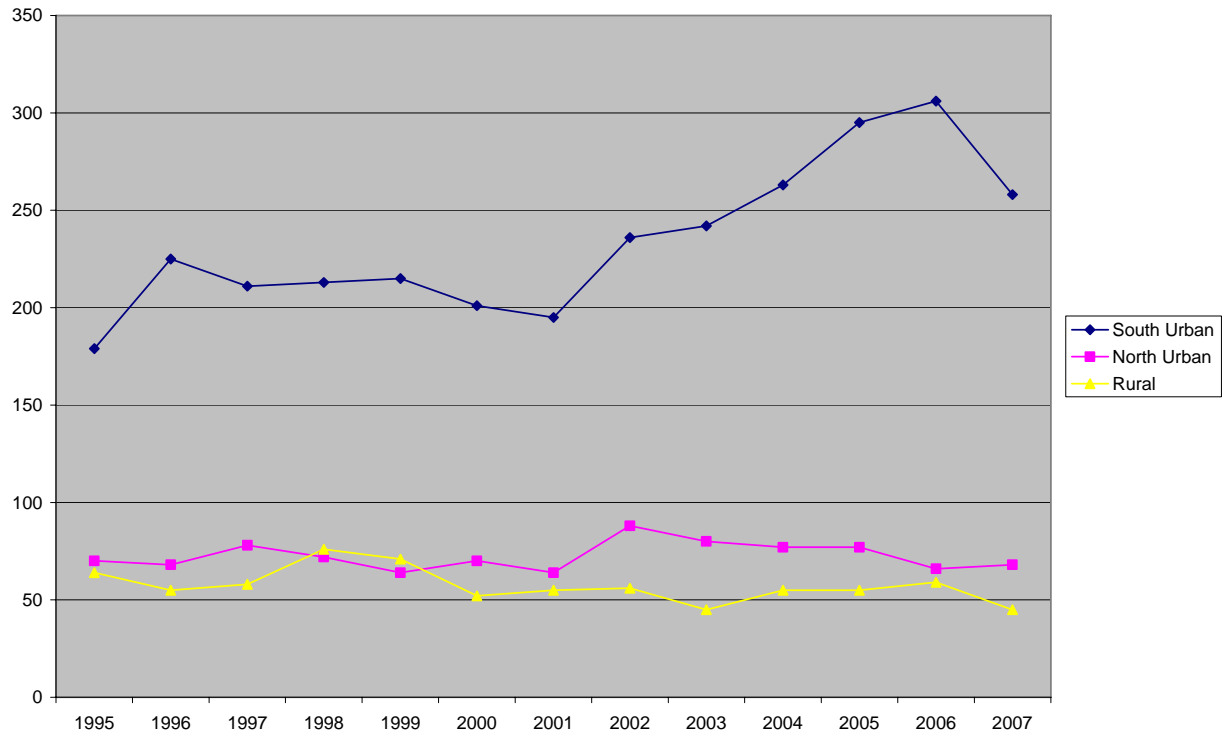
Fatality Charts

NOTE:

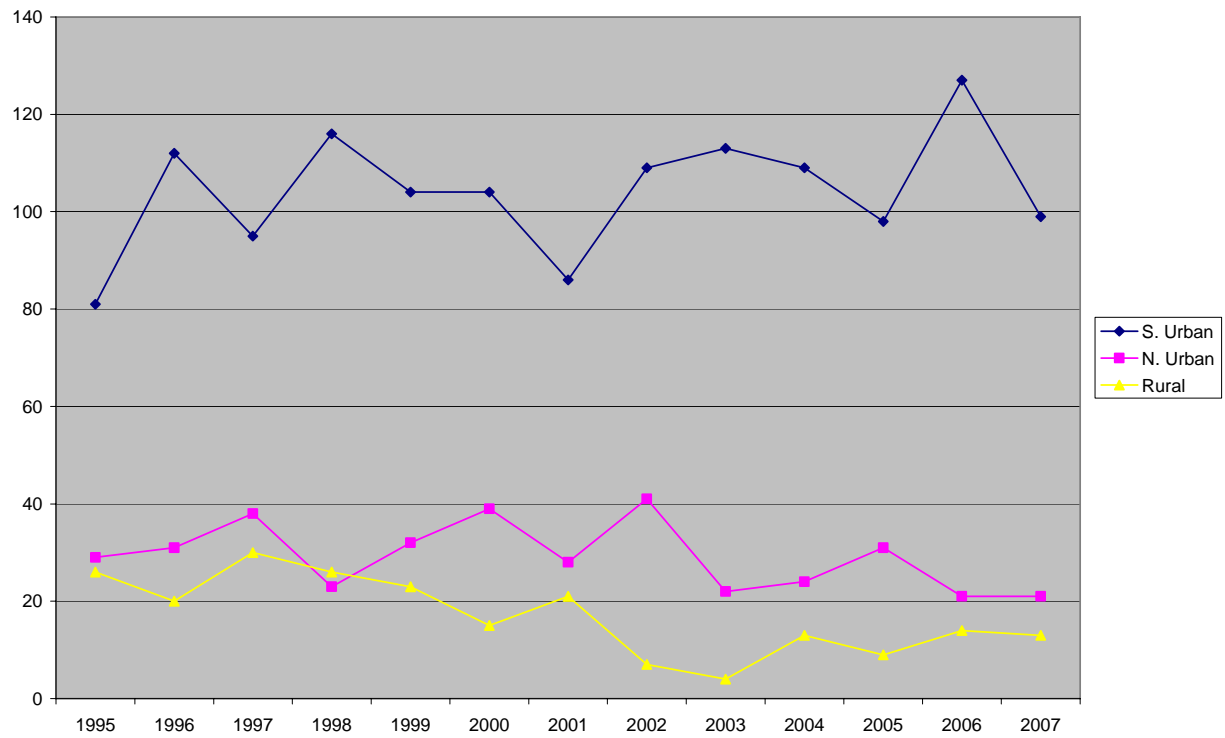
For the impaired fatality information, only the known test results are used. For national figures, NHTSA uses a statistically based formula to estimate the number of fatalities that were recorded as unknown that were probably alcohol-related. This calculated number of "AL related fatalities" is added to the known number to reach an overall AL related fatality number.



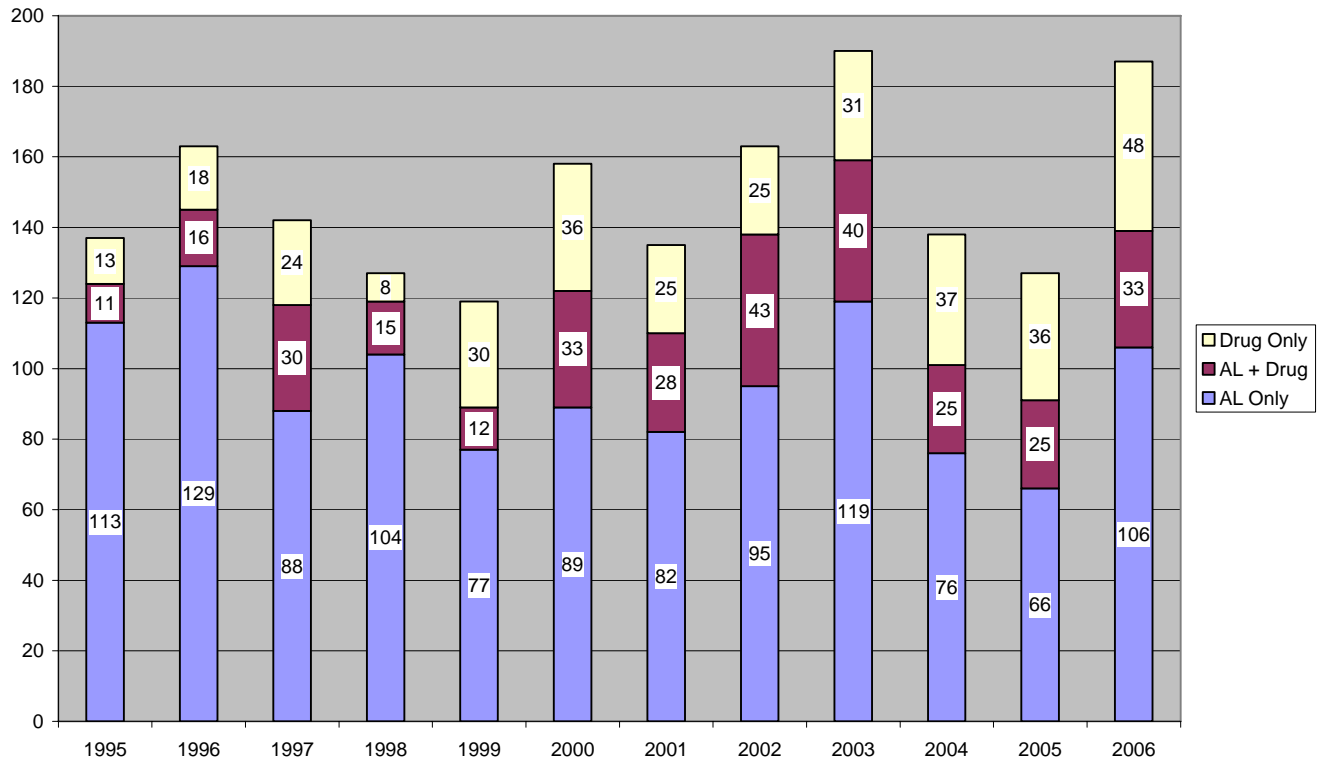
Total Fatalities, S. Urban, N. Urban, Rural: Nevada, 1995 - 2007



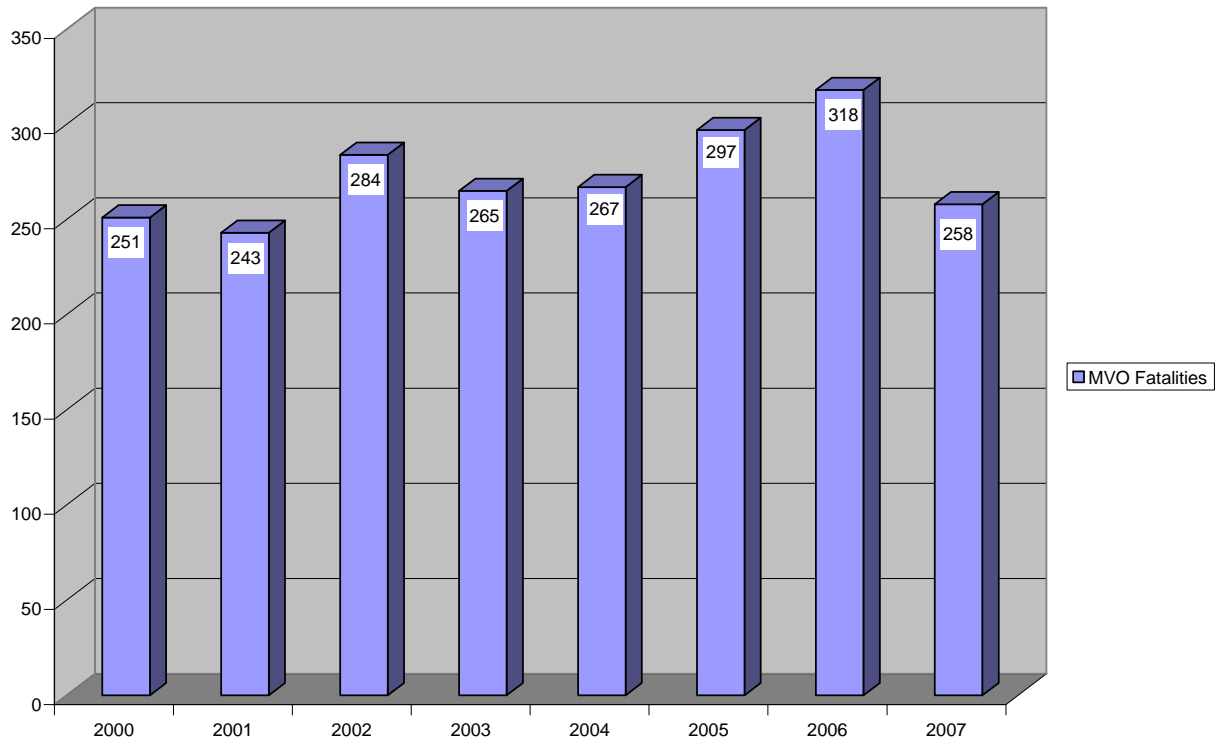
Alcohol Related Fatalities, S. Urban, N. Urban, Rural: Nevada, 1995 - 2007



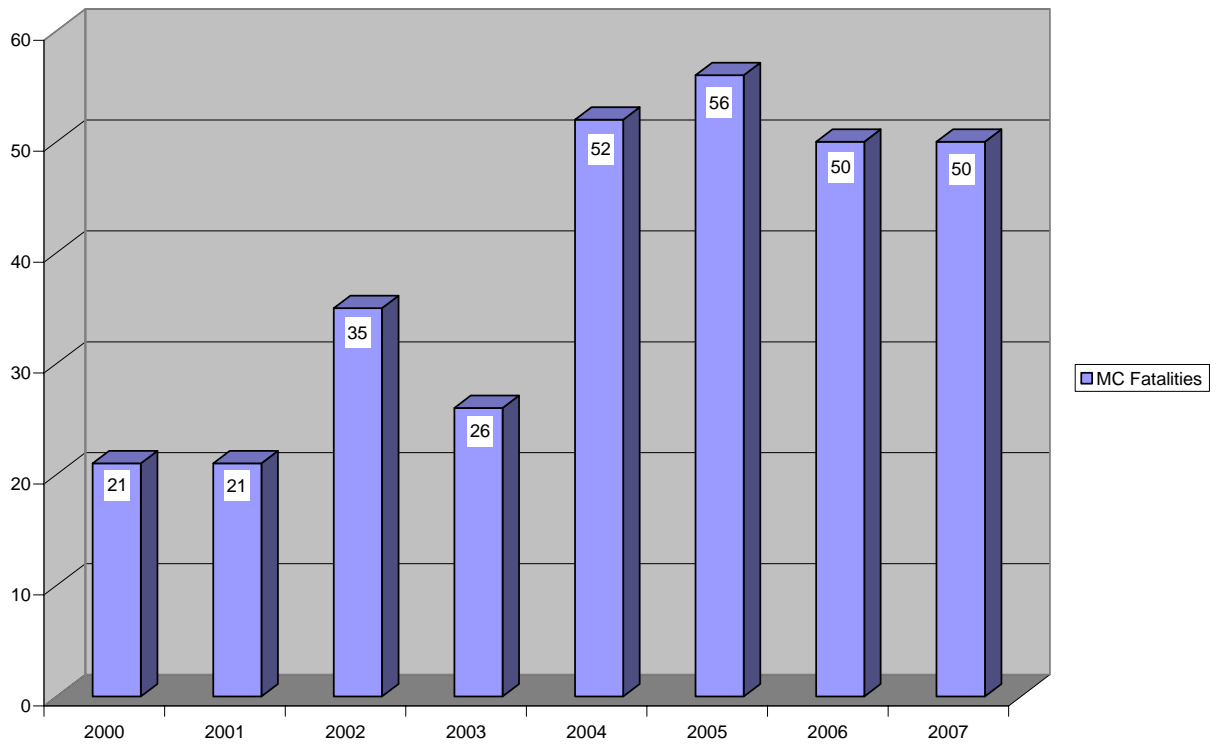
Fatalities by Type of Impairment Nevada, 1995 - 2006
Drug Only, Alcohol + Drug, Alcohol Only



Motor Vehicle Occupant Fatalities Nevada, 2000 - 2007

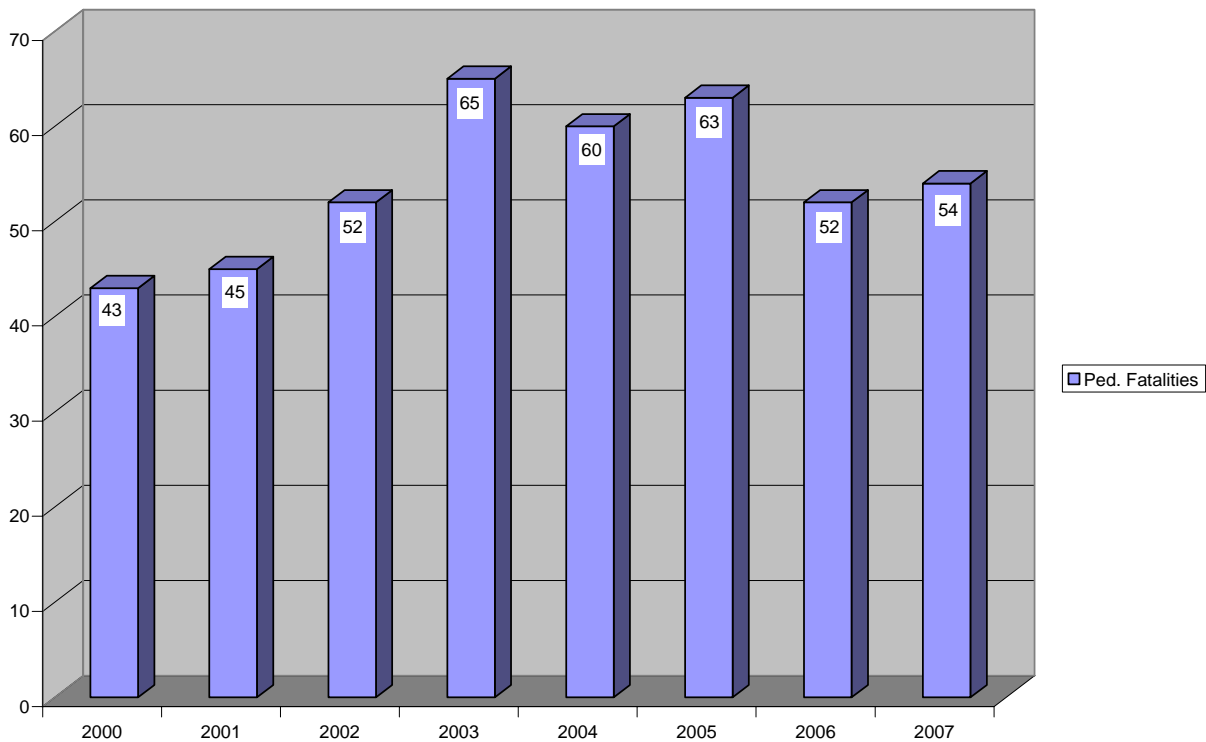


Motorcycle Fatalities Nevada, 2000 - 2007



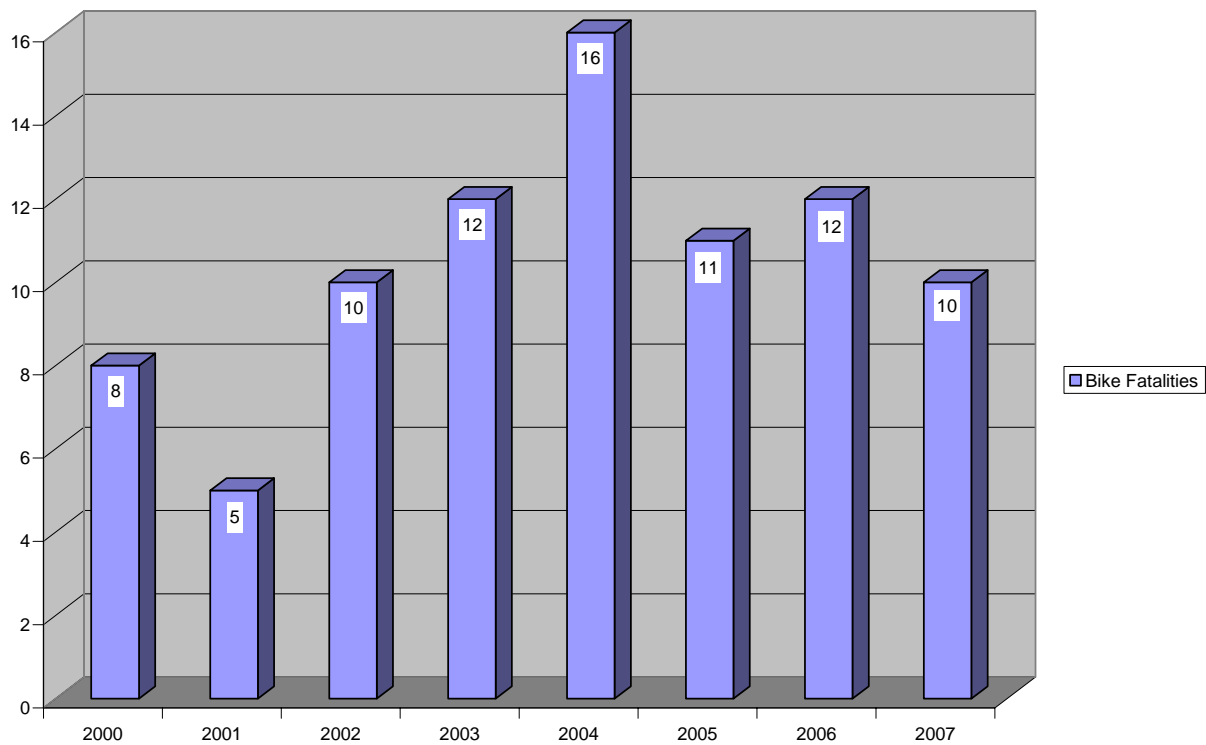
Pedestrian Fatalities

Nevada, 2000 - 2007

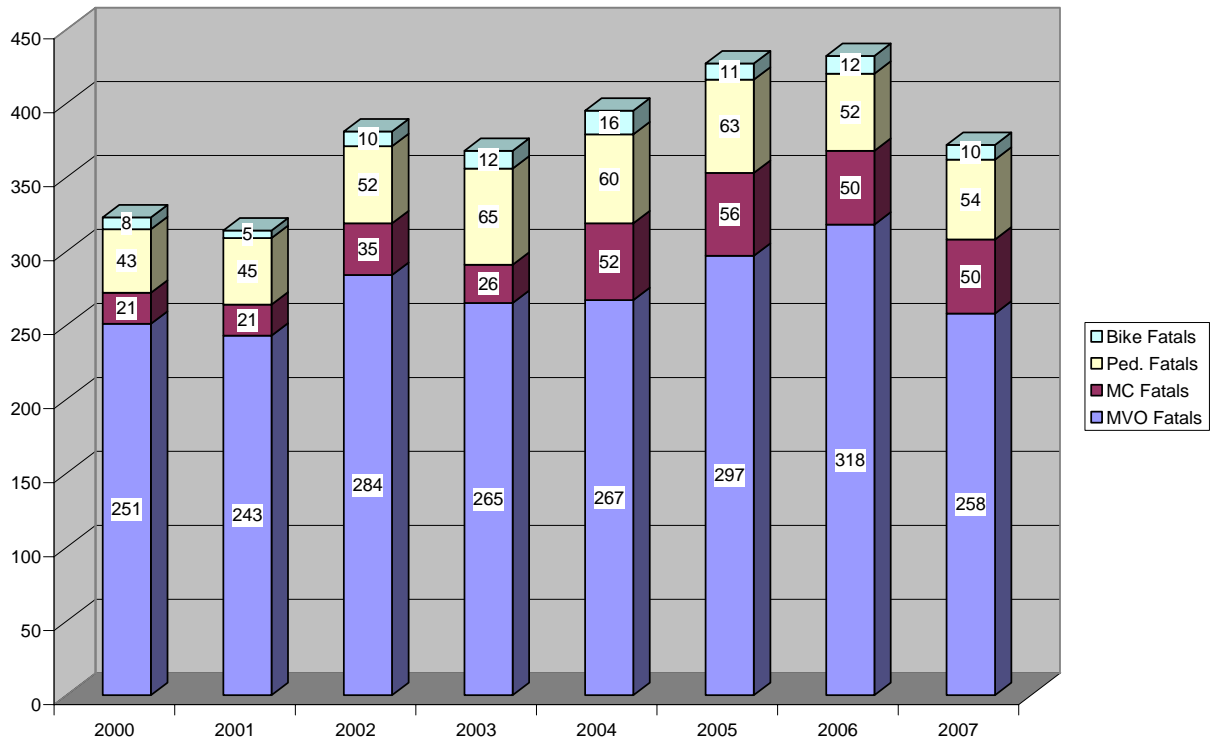


Bicycle Fatalities

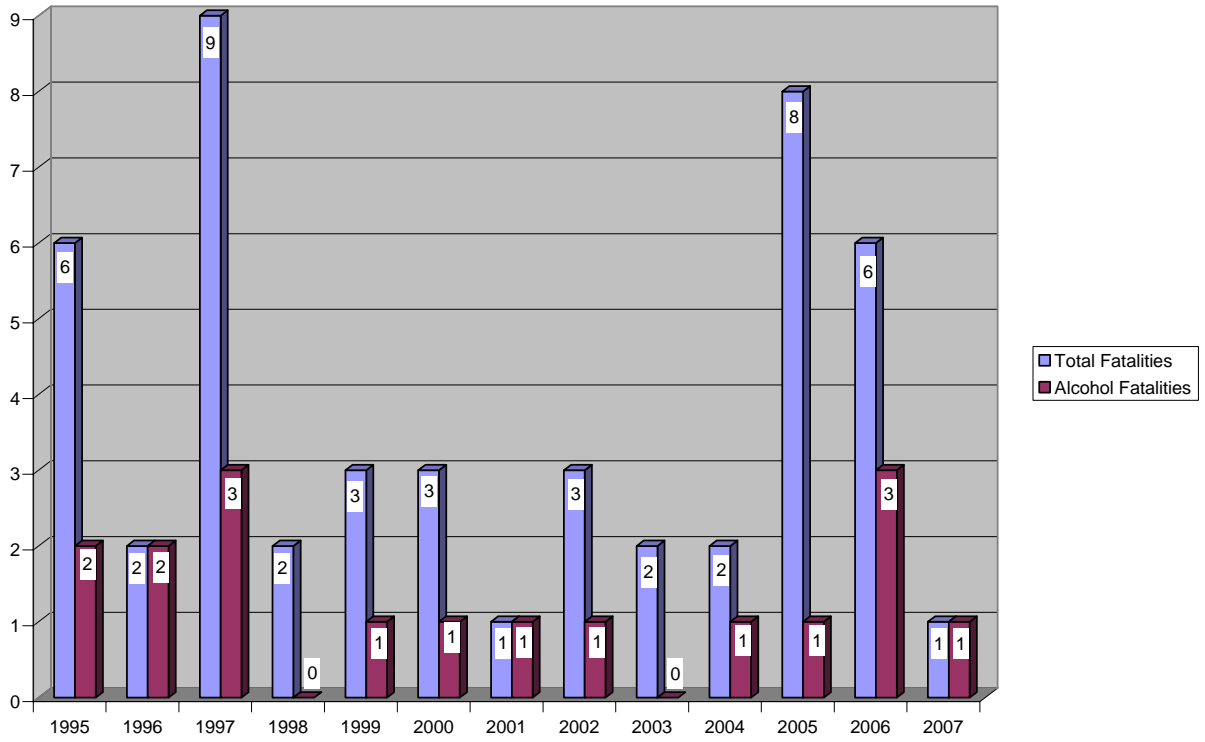
Nevada, 2000 - 2007



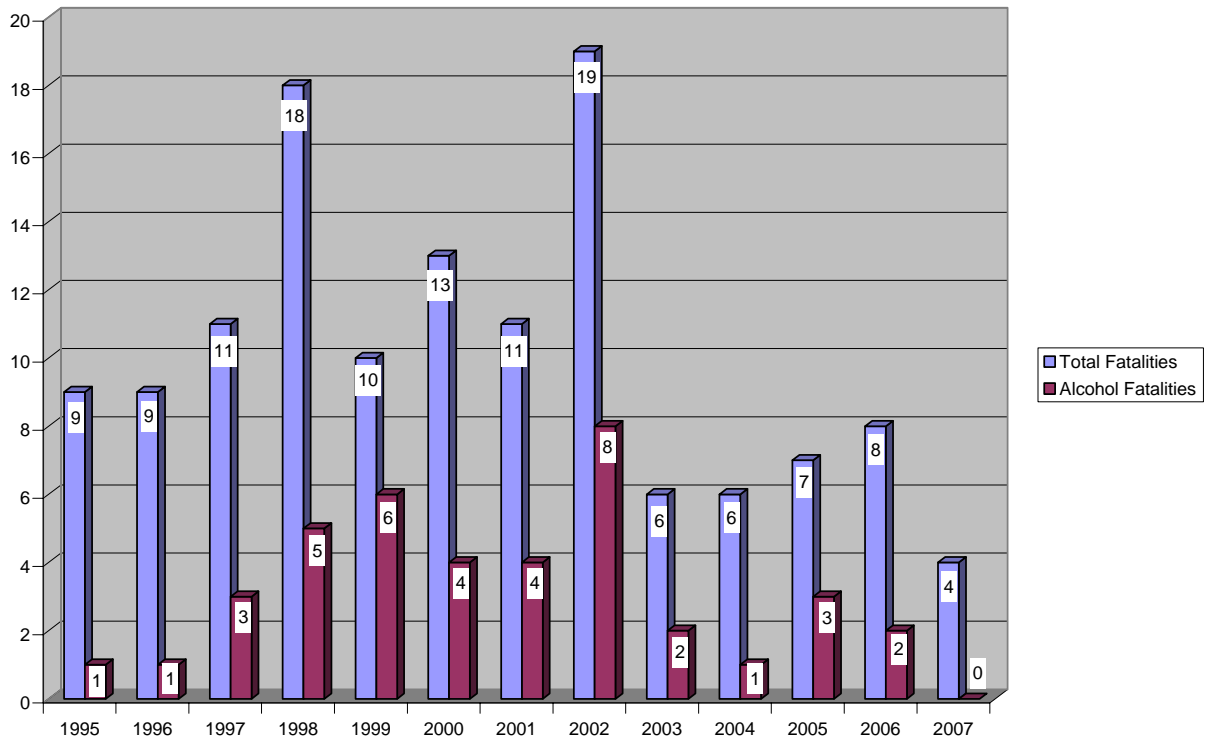
Nevada Fatals, 2000 - 2007 : Motor Vehicle, Motorcycle, Pedestrian, Bicycle



Carson City County: 1995 - 2007 Total vs Alcohol Fatalities

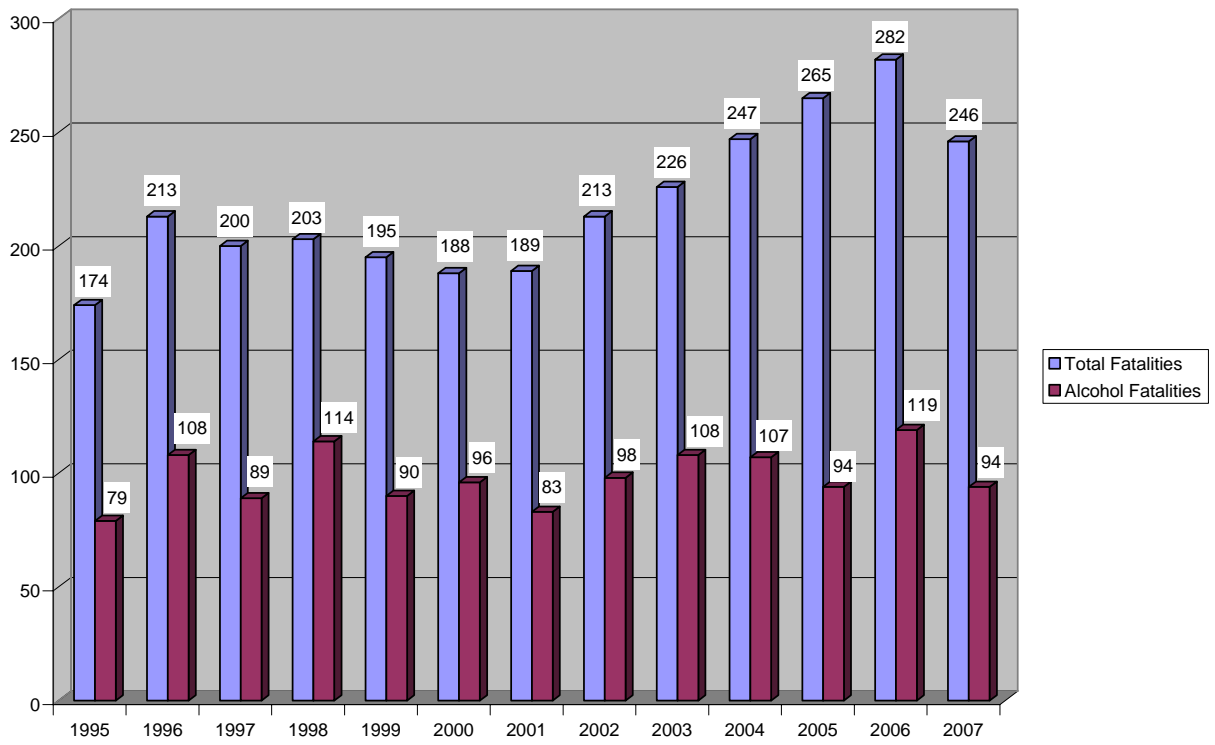


Churchill County: 1995 - 2007 Total vs Alcohol Fatalities



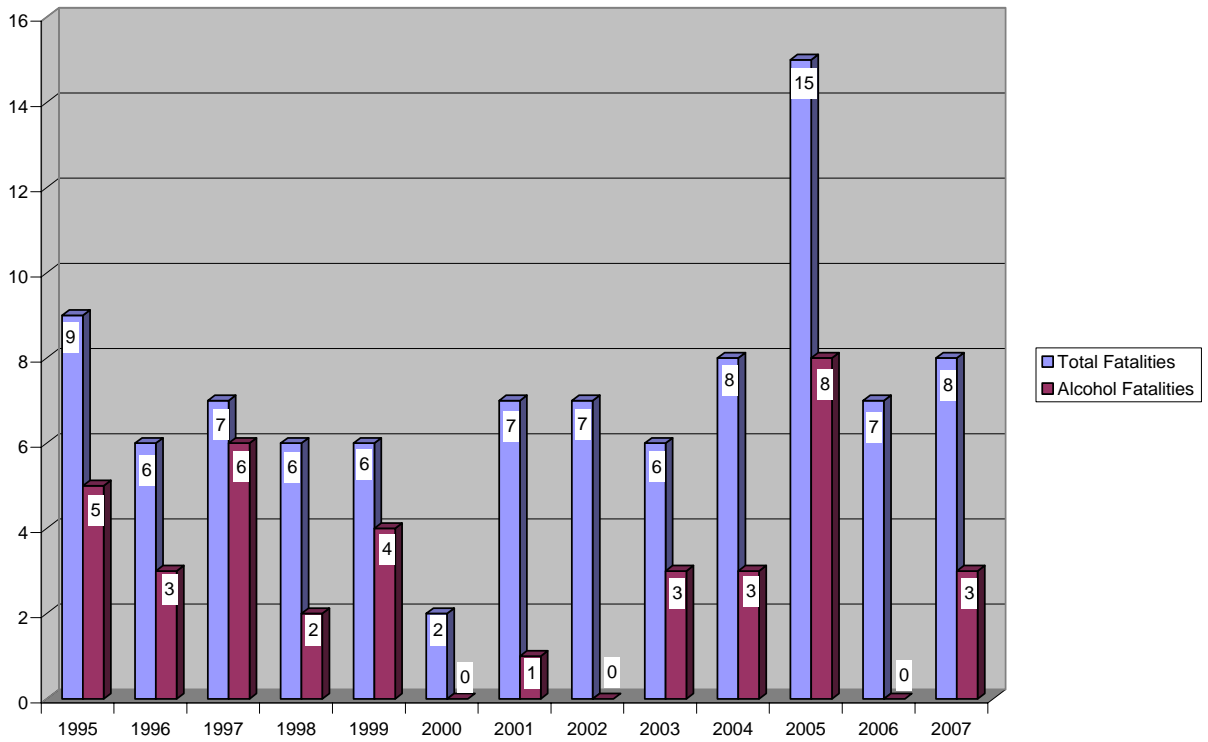
Clark County: 1995 - 2007

Total vs Alcohol Fatalities



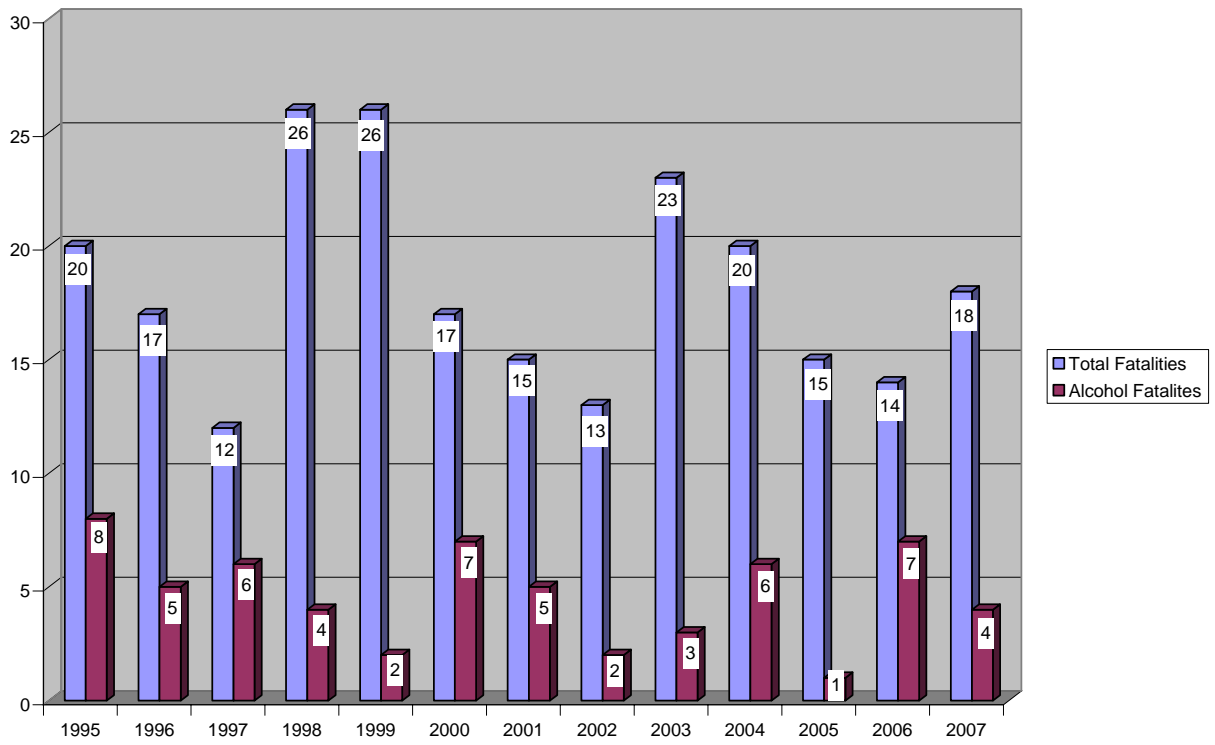
Douglas County: 1995 - 2007

Total vs Alcohol Fatalities



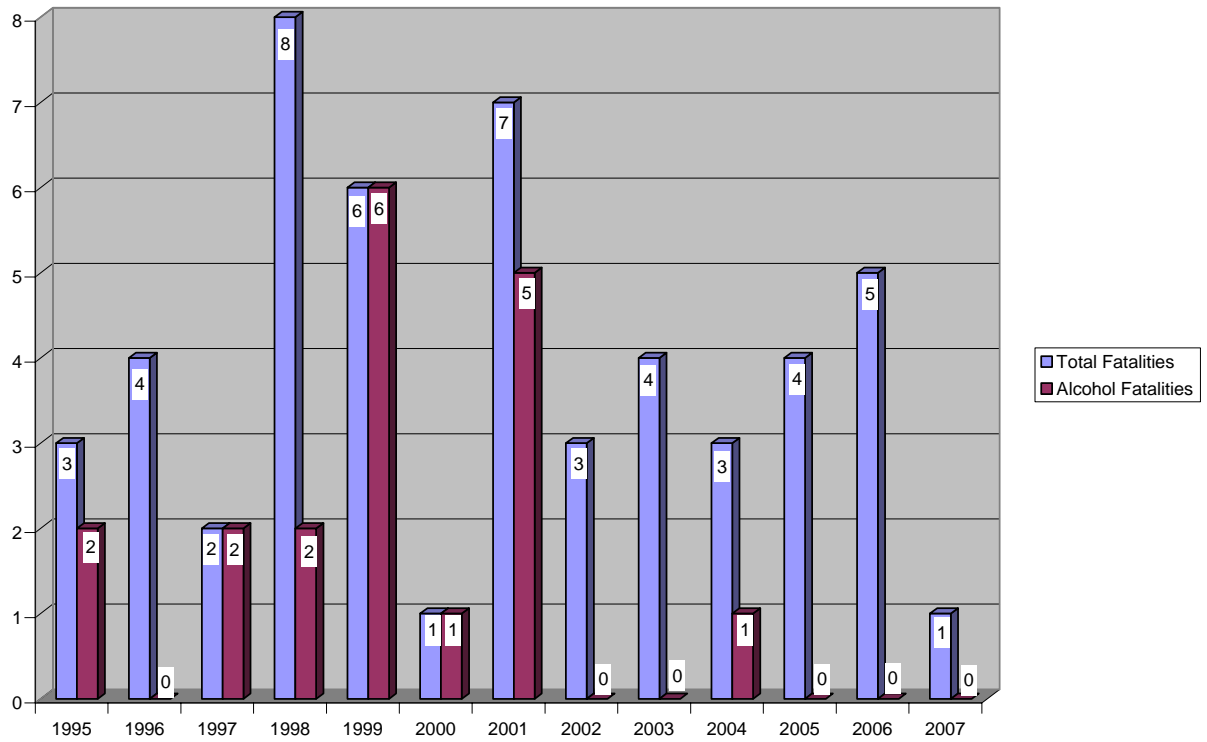
Elko County: 1995 - 2007

Total vs Alcohol Fatalities



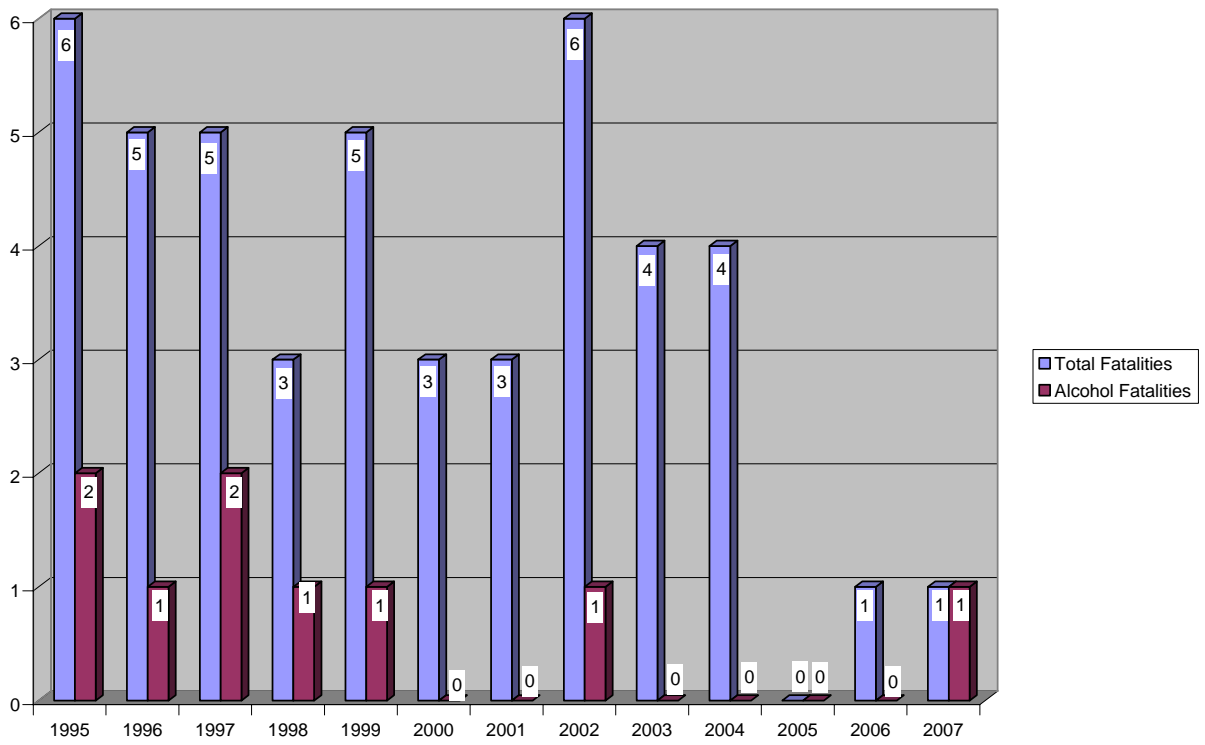
Esmeralda County: 1995 - 2007

Total vs Alcohol Fatalities



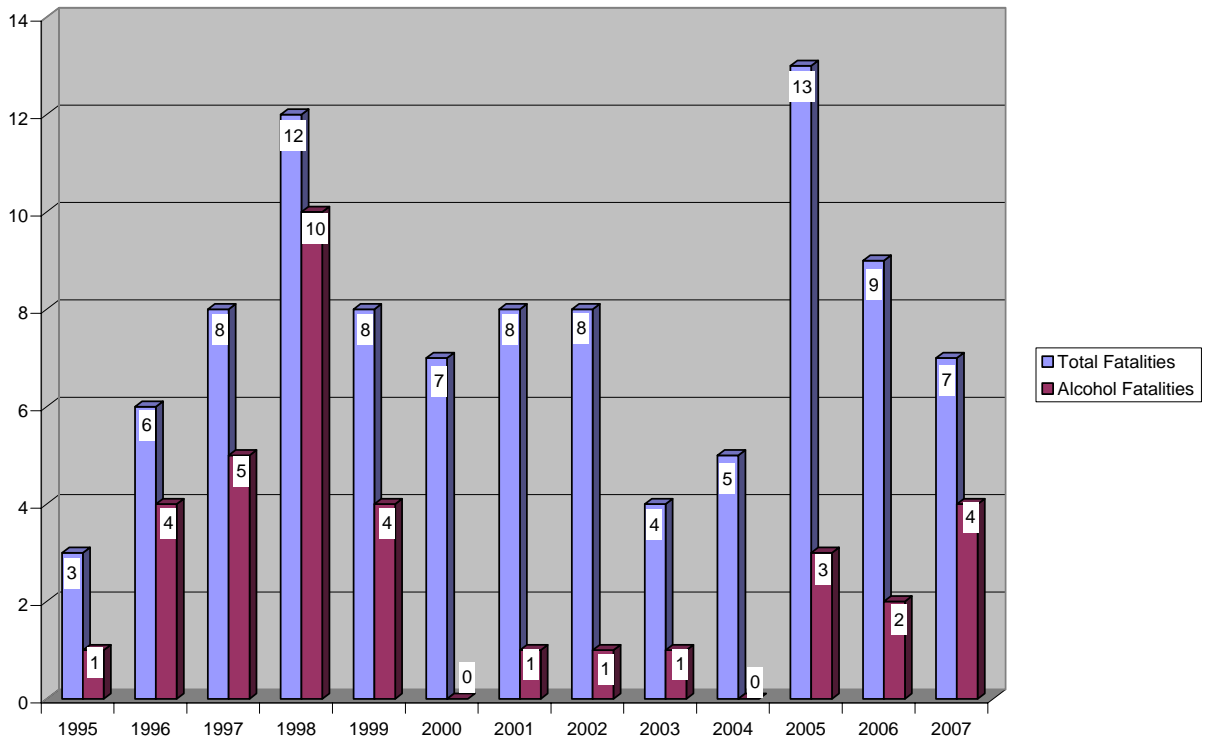
Eureka County: 1995 - 2007

Total vs Alcohol Fatalities



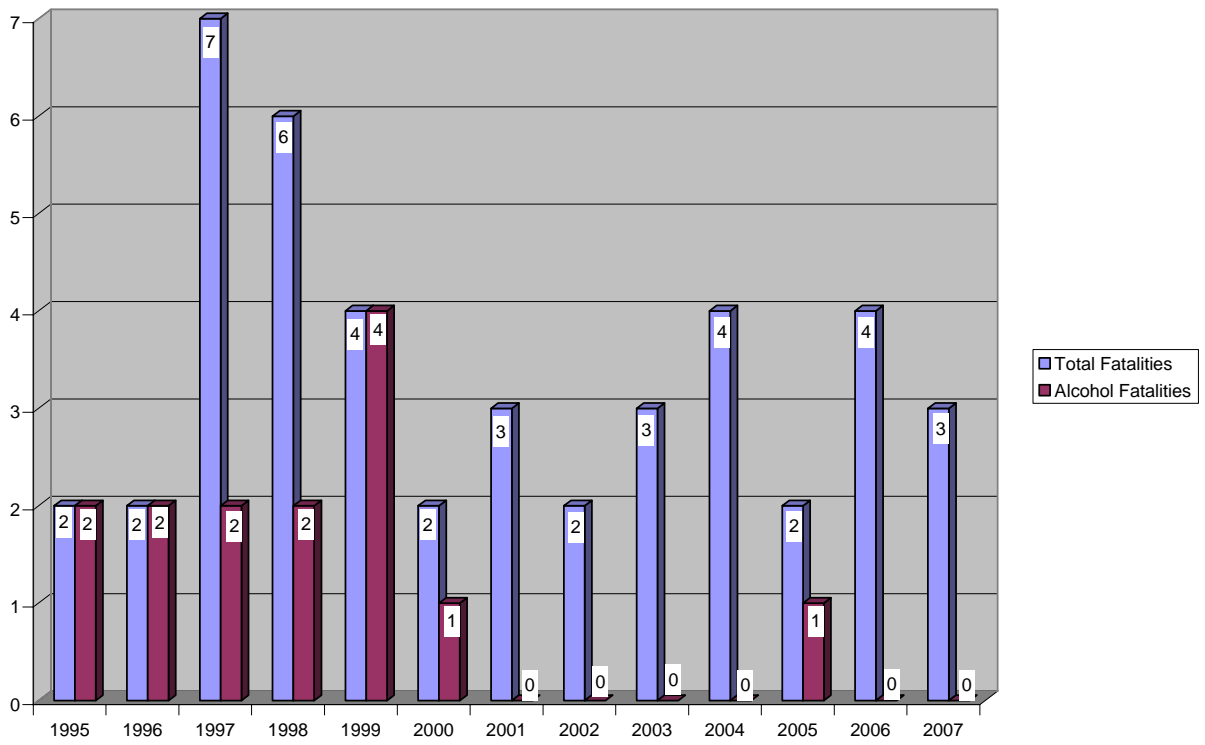
Humboldt County: 1995 - 2007

Total vs Alcohol Fatalities



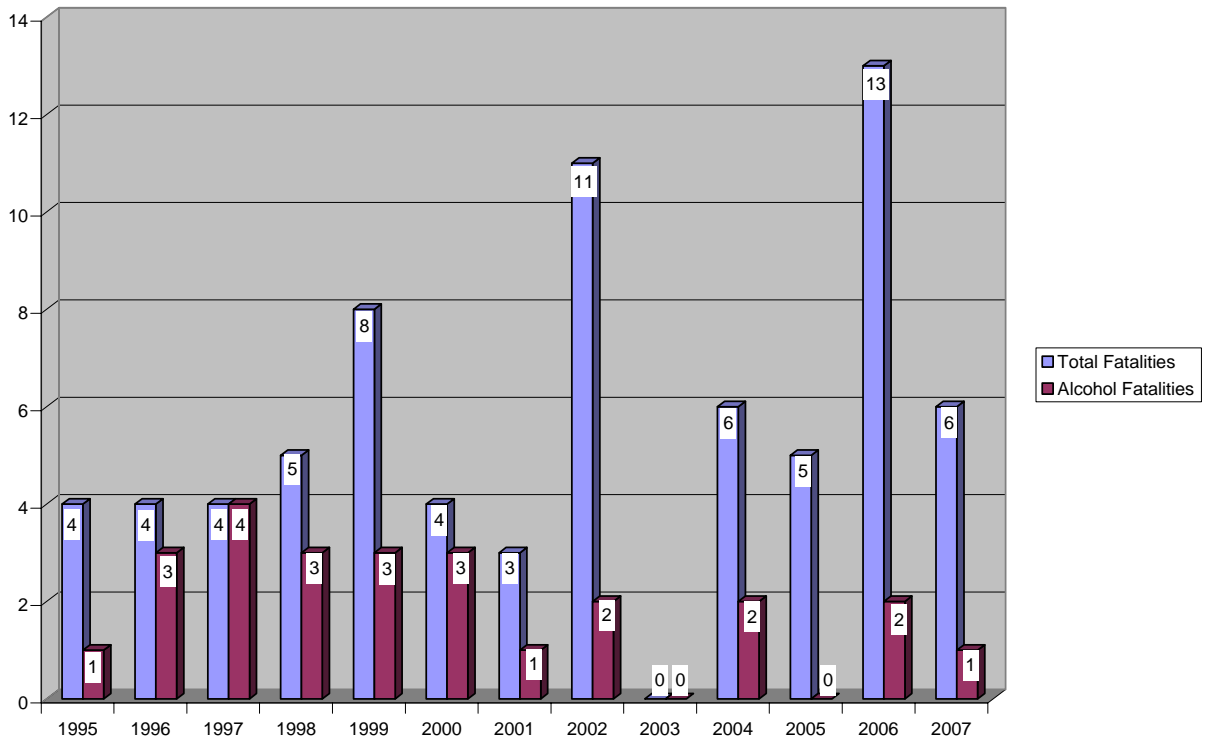
Lander County: 1995 - 2007

Total vs Alcohol Fatalities



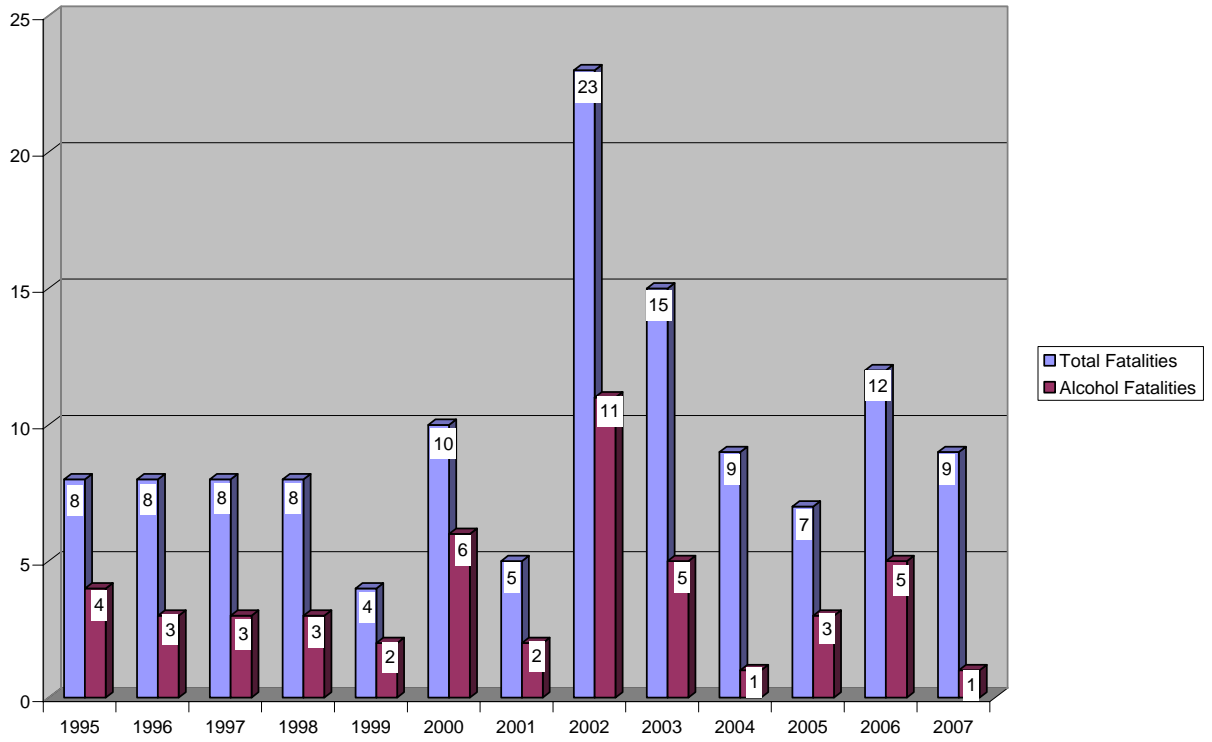
Lincoln County: 1995 - 2007

Total vs Alcohol Fatalities



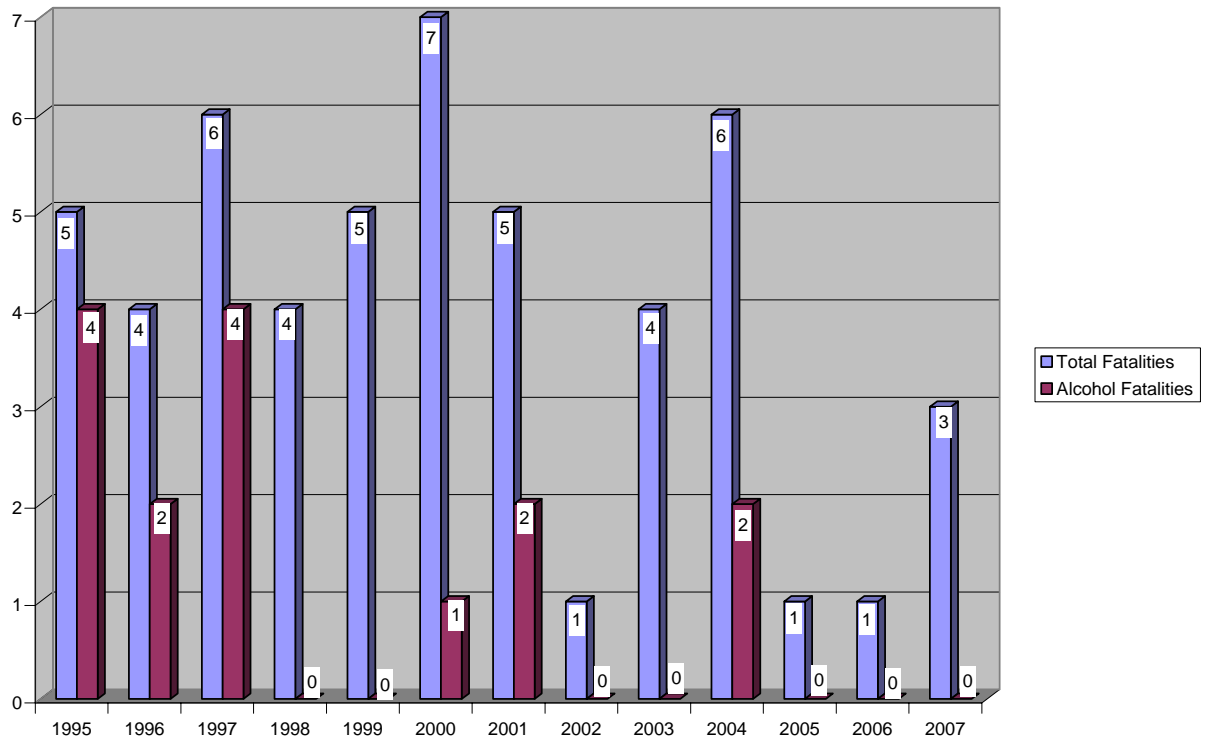
Lyon County: 1995 - 2007

Total vs Alcohol Fatalities



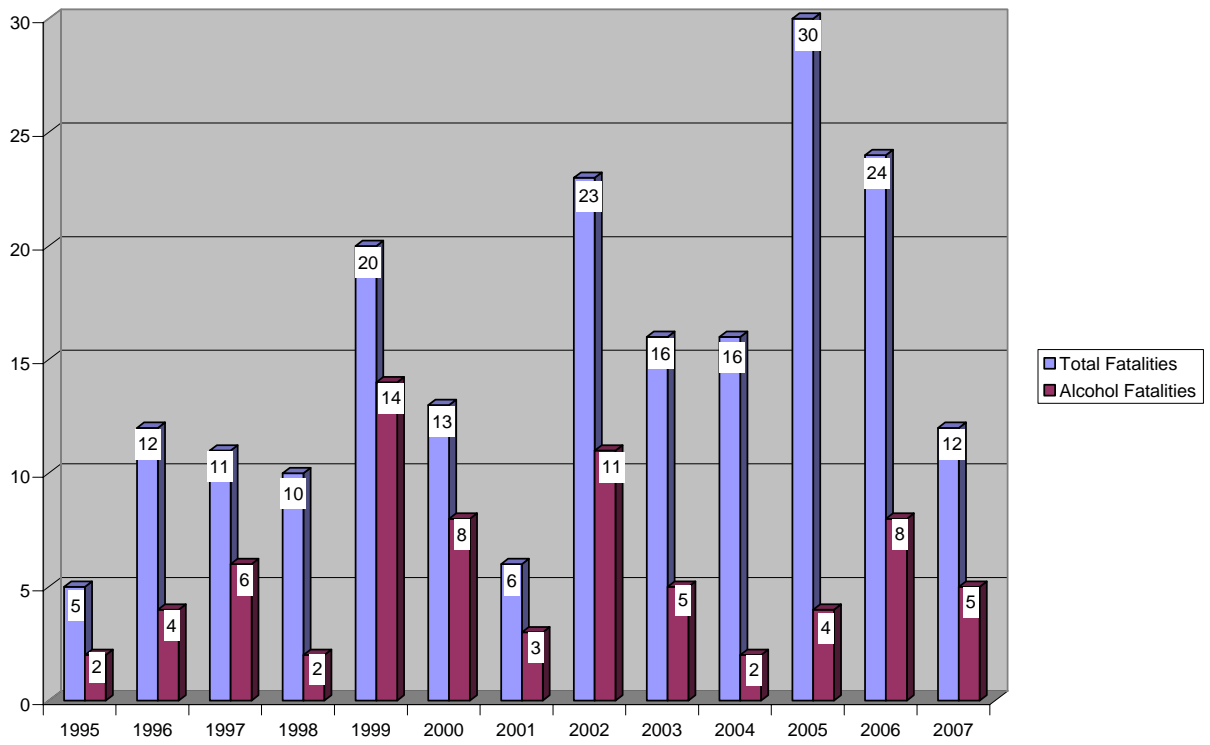
Mineral County: 1995 - 2007

Total vs Alcohol Fatalities



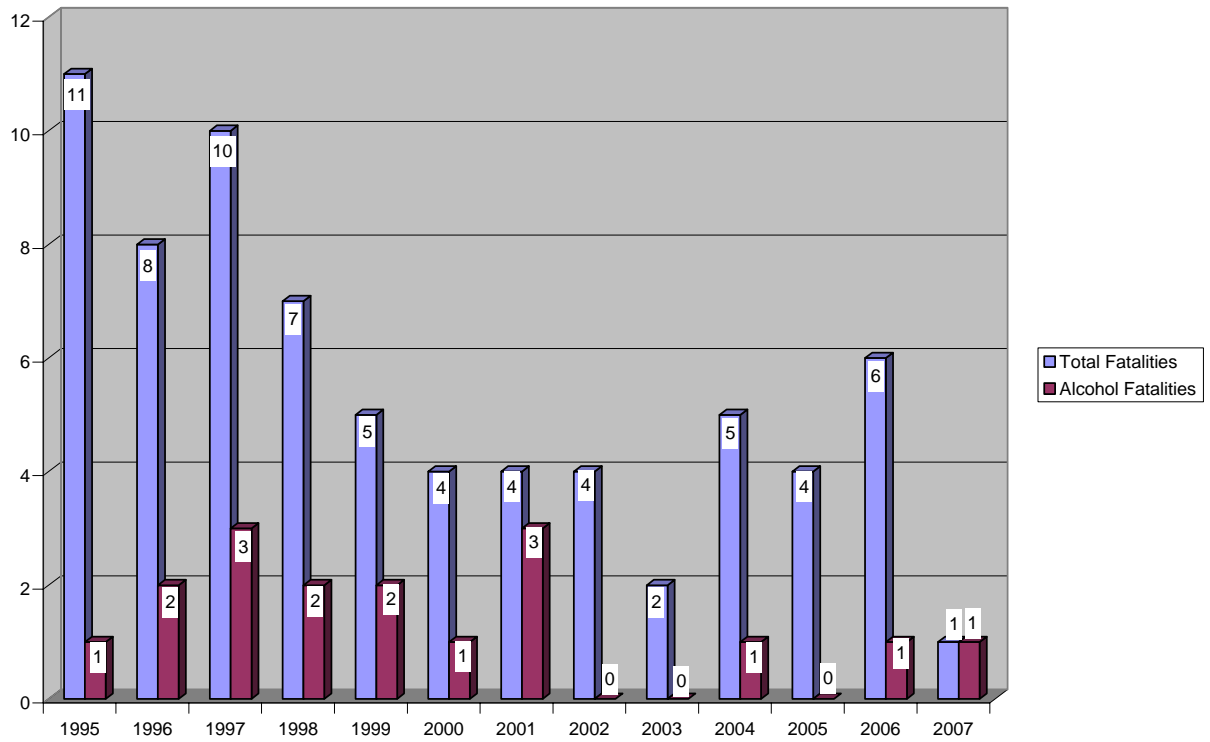
Nye County: 1995 - 2007

Total vs Alcohol Fatalities



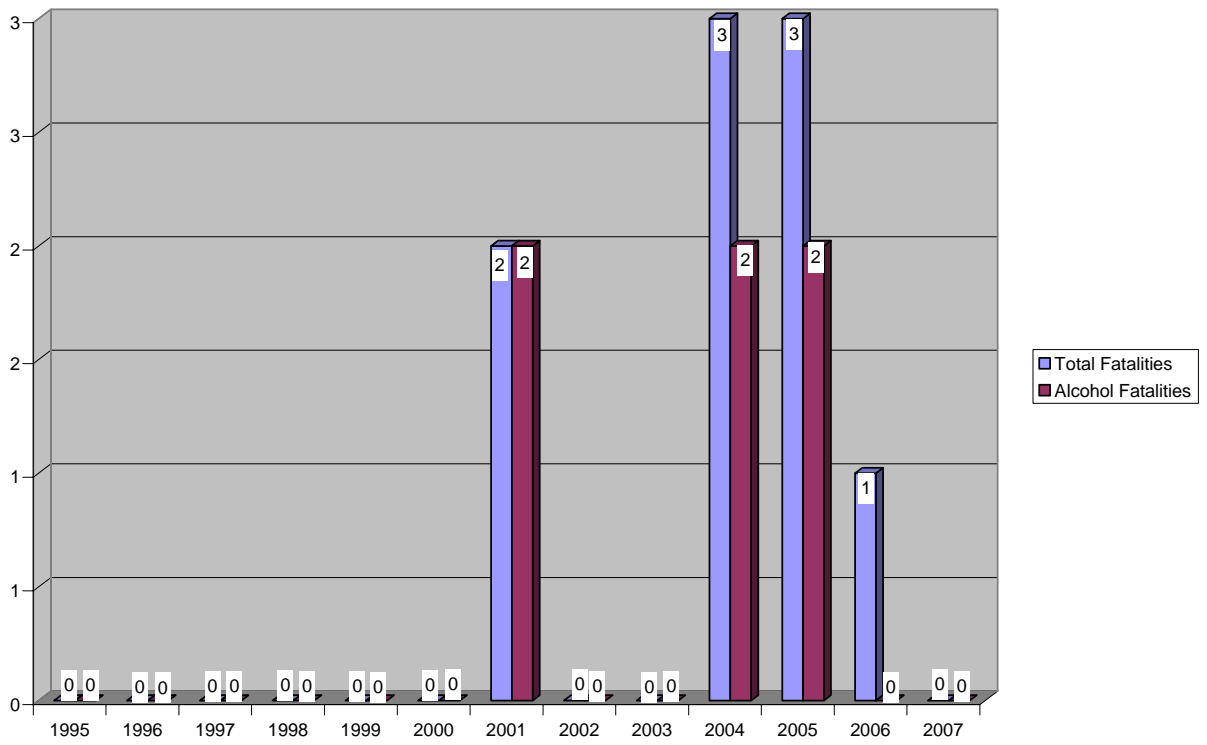
Pershing County: 1995 - 2007

Total vs Alcohol Fatalities



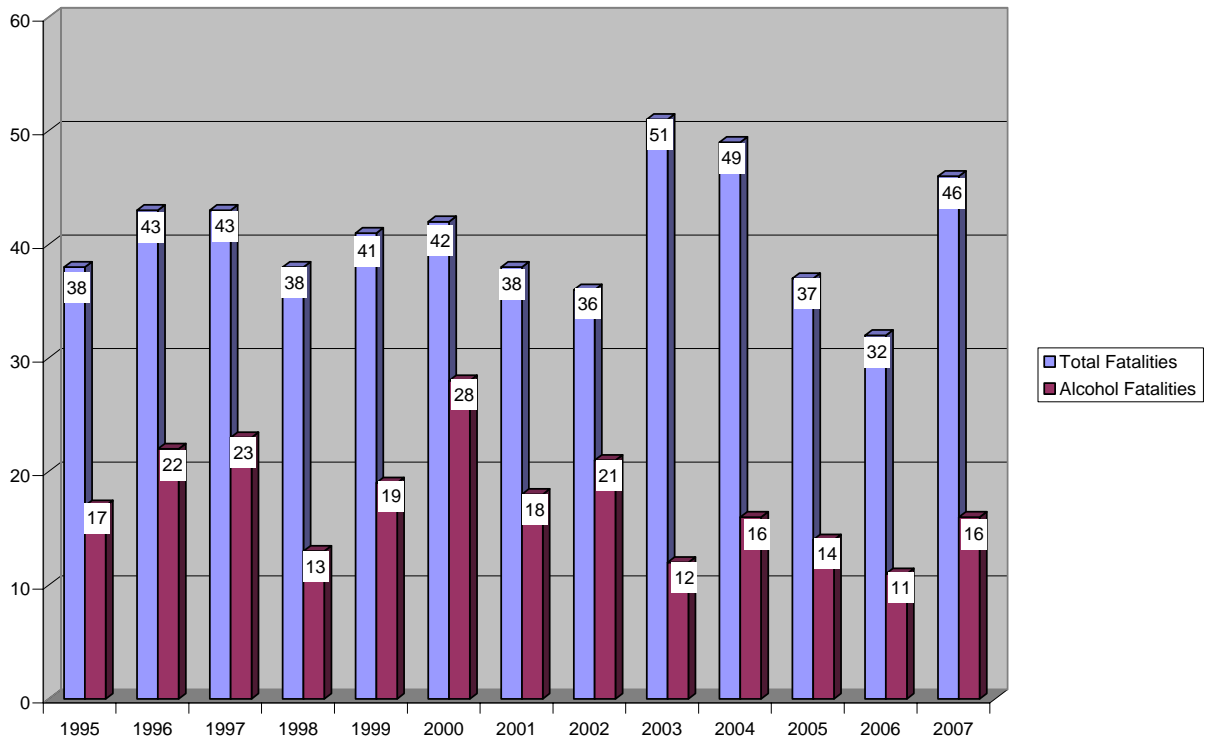
Storey County: 1995 - 2007

Total vs Alcohol Fatalities



Washoe County: 1995 - 2007

Total vs Alcohol Fatalities



White Pine County: 1995 - 2007 Total vs Alcohol Fatalities

